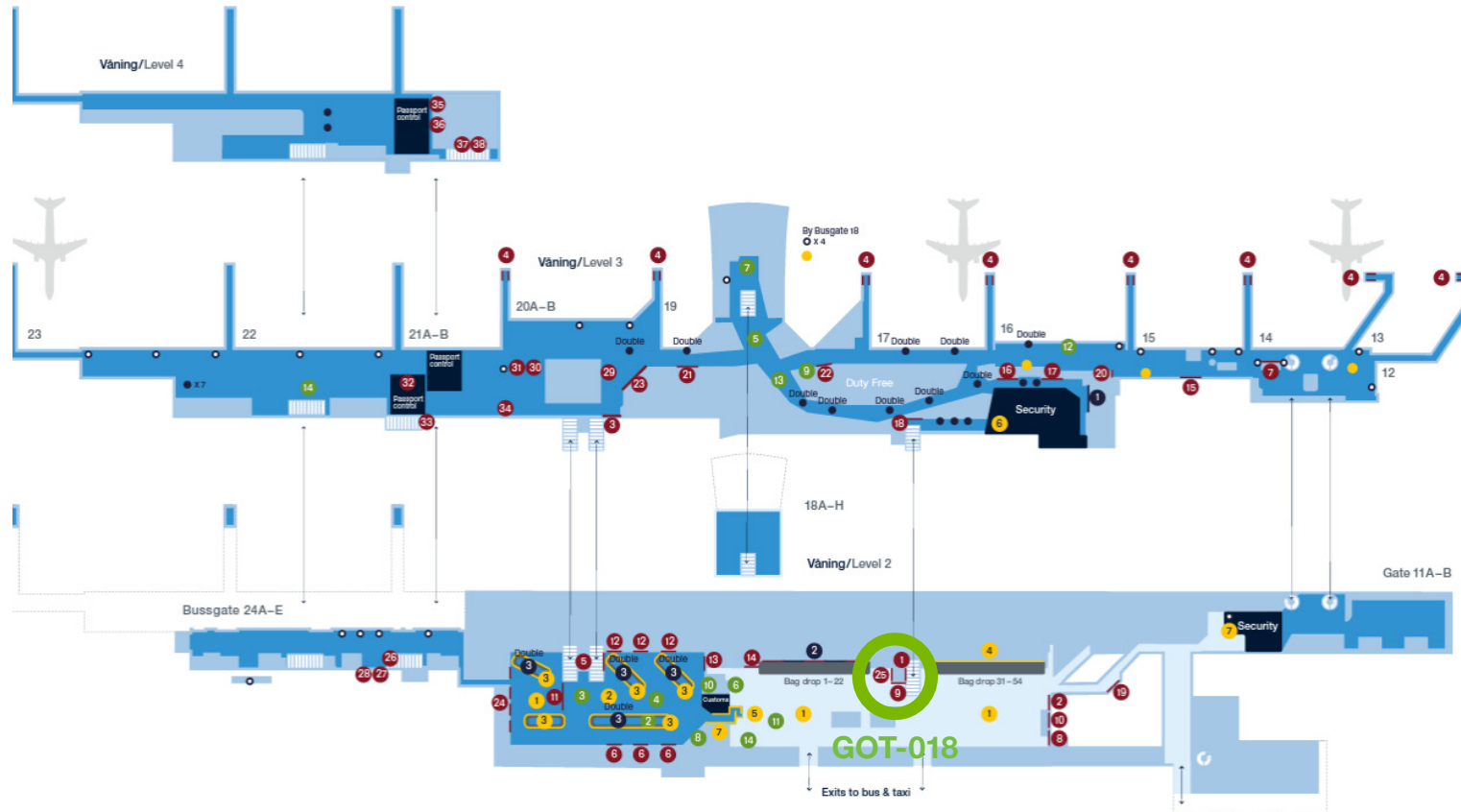




Airport	Göteborg Landvetter Airport
Location	Check-in hall, elevator shaft
Product	Banner
Name	GOT-018
Number of faces	3
Format	Go to page 3, 4 & 5
Gross price / month	150 000 SEK
Installation	Not included
Campaign period	1 month
Materail deadline	Minimum 5 working days before campaign start

Location

GOT-018



Specifications sheet

GOT-018

Delivery address:

Swedavia AB
c/o SPIRIT Air Cargo
Flygfraktsvägen 7
Fraktzon A uppgång C
438 70 LAndvetter
ATT: Nasim Witermark
Delivery: Monday to Friday, 06:00-22:00

Contact person:

Nasim Witermark
010-109 31 07
nasim.witermark@swedavia.se

The material must be delivered no later than five working days before campagne start.



Technical details:

Banner in the check-in hall, on the left side och the elevator shaft towards the security check-point.

Space visible/image area (for original production):

3 160 x 5 500 mm

Production dimensions (including construction):

3 160 x 5 500 mm

Material (all material must be fire-classified):

Stable form polyester banner, such as Neschen Artist Light, Artist Heavy or George-Otto Friedrich 7058. B1 flammability class as per DIN 4102.

Construction:

Keder rail at the top and stitched weight at the bottom.

Packaging and marking:

The material must be clearly marked with the advertiser, campaignperiod, subject and indexnumber, as well as a picture of the subject. The material must also be clearly marked with the airport contact person.

Production:

Since it is complicated to produce this product, production may only be carried out by a printing firm with enough knowledge about these systems. Contact Swedavia for further information.

Specifications sheet

GOT-018

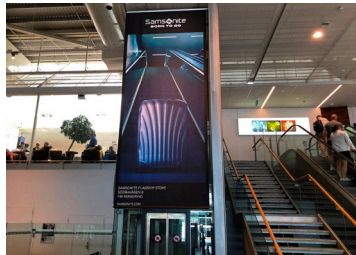
Delivery address:

Swedavia AB
c/o SPIRIT Air Cargo
Flygfraktsvägen 7
Fraktzon A uppgång C
438 70 LAndvetter
ATT: Nasim Witermark
Delivery: Monday to Friday, 06:00-22:00

Contact person:

Nasim Witermark
010-109 31 07
nasim.witermark@swedavia.se

The material must be delivered no later than five working days before campagne start.



Technical details:

Banner in the check-in hall, on the front of the elevator shaft to the left of the escalator leading up towards the security checkpoint.

Space visible/image area (for original production):

2 300 x 5 500 mm

Production dimensions (including construction):

2 300 x 5 500 mm

Material (all material must be fire-classified):

Stable form polyester banner, such as Neschen Artist Light, Artist Heavy or George-Otto Friedrich 7058. B1 flammability class as per DIN 4102.

Construction:

Keder rail at the top and stitched weight at the bottom.

NOTE: the banner may not be folded for delivery.

It is important that the original is modified so that there is no text/image on the top 9 cm due to stitching. A channel at the lowest 7 cm, shall have an extra white surface.

Packaging and marking:

The material must be clearly marked with the advertiser, campaignperiod, subject and indexnumber, as well as a picture of the subject. The material must also be clearly marked with the airport contact person.

Specifications sheet

GOT-018

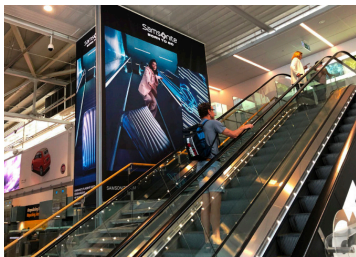
Delivery address:

Swedavia AB
c/o SPIRIT Air Cargo
Flygfraktsvägen 7
Fraktzon A uppgång C
438 70 LAndvetter
ATT: Nasim Witermark
Delivery: Monday to Friday, 06:00-22:00

Contact person:

Nasim Witermark
010-109 31 07
nasim.witermark@swedavia.se

The material must be delivered no later than five working days before campagne start.



Technical details:

Banner on the side of elevator shaft in check-in hall towards security check-point..

Space visible/image area (for original production):

4 500 x 5 500 mm.

The lower 25 % of the banner has limited display. The lower right corner is not seen well when extended to full length. No logotype or special information in this corner.

Material (all material must be fire-classified):

Thick polyester 220g. B1 flammability class as per DIN 4102.

Construction:

Keder rail 8.5 mm at the top and bottom.

Packaging and marking:

The material must be clearly marked with the advertiser, campaignperiod, subject and indexnumber, as well as a picture of the subject. The material must also be clearly marked with the airport contact person.

Production:

Since it is complicated to produce this product, production may only be carried out by a printing firm with enough knowledge about these systems. Contact Swedavia for further information.